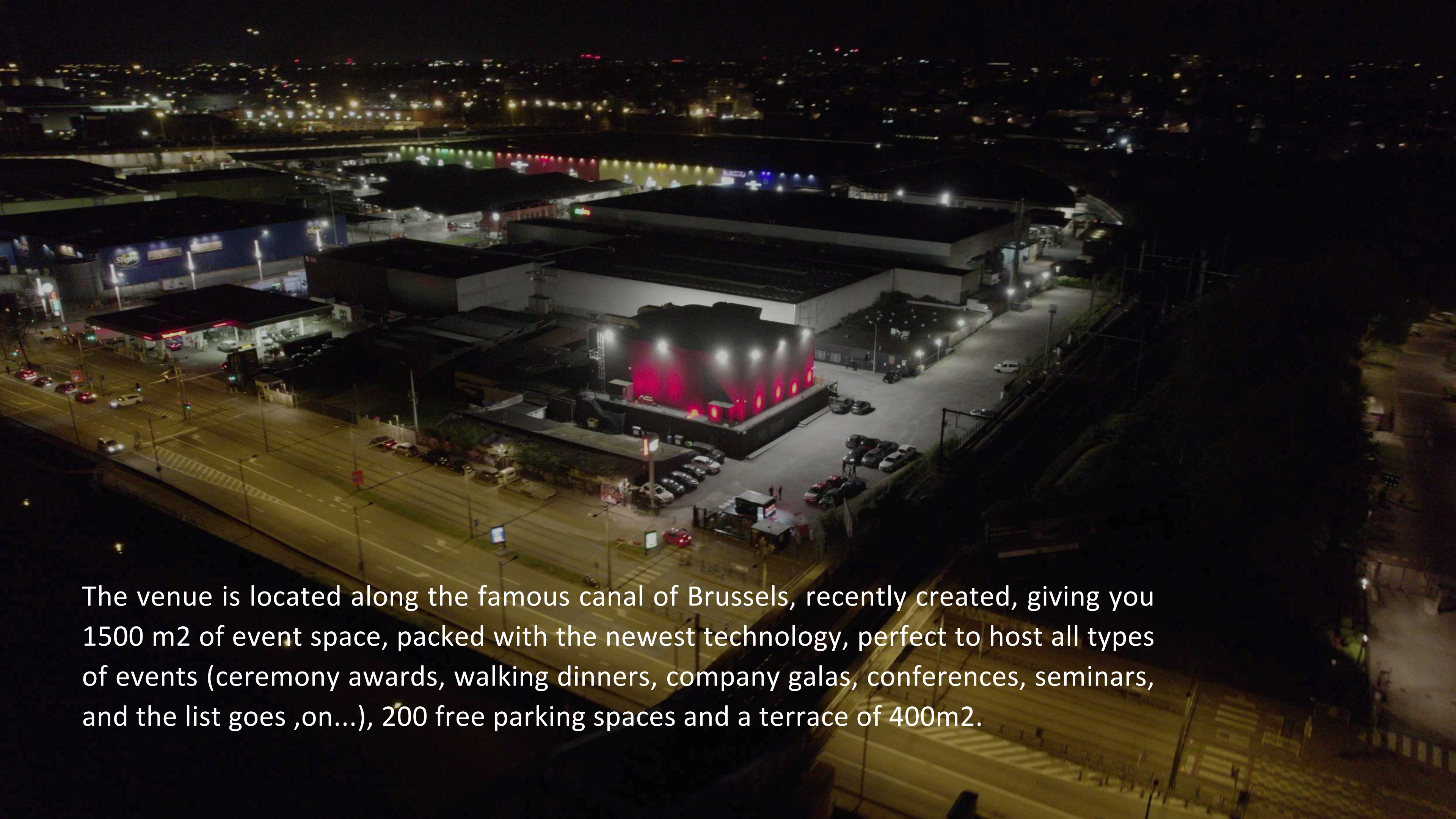


EVENT VENUE\_

**LIFT**  
**BRUSSELS**



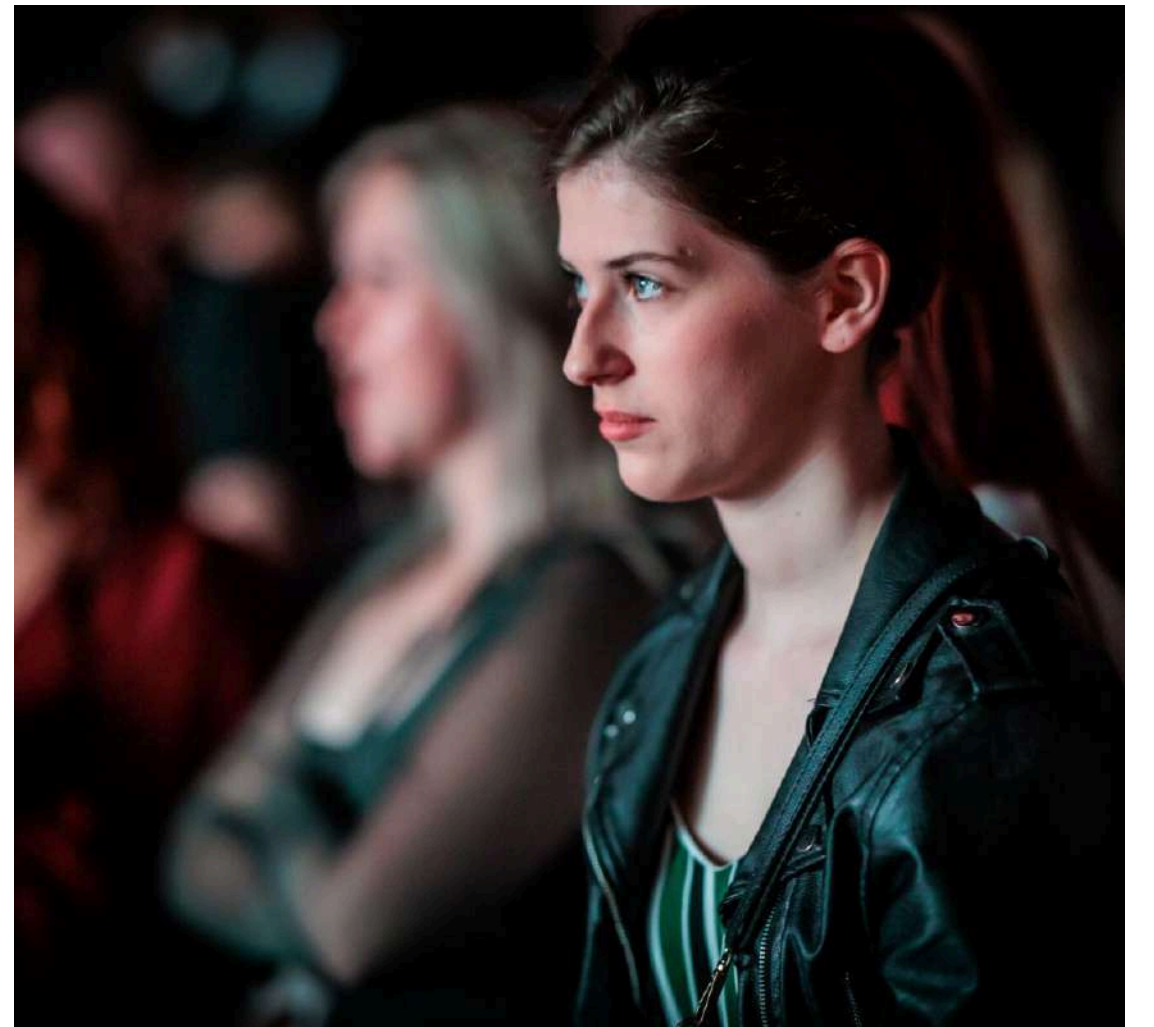
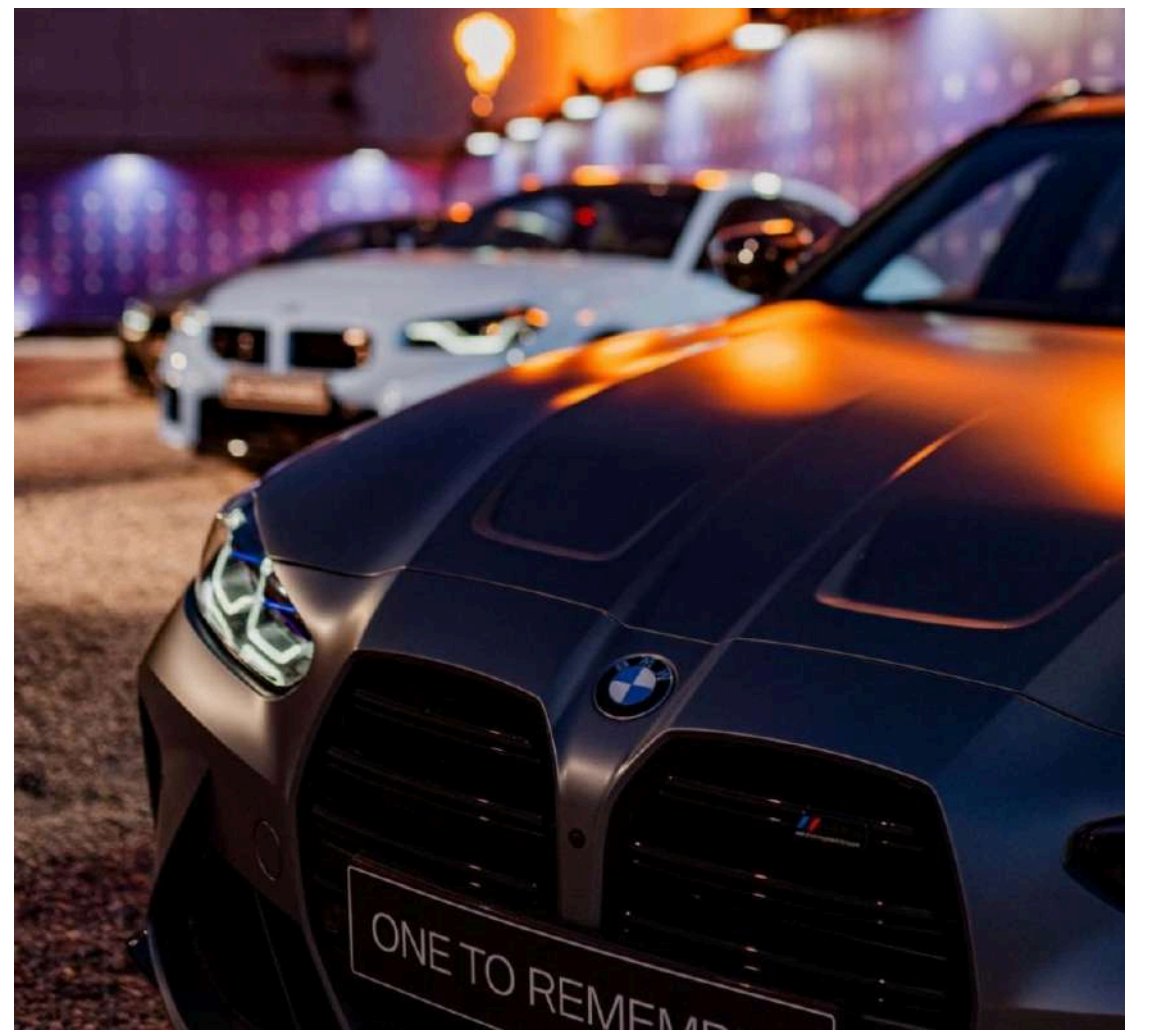
The venue is located along the famous canal of Brussels, recently created, giving you 1500 m<sup>2</sup> of event space, packed with the newest technology, perfect to host all types of events (ceremony awards, walking dinners, company galas, conferences, seminars, and the list goes ,on...), 200 free parking spaces and a terrace of 400m<sup>2</sup>.

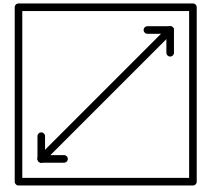


**A SPACE**

*WITH*

**LIMITLESS  
OPPORTUNITIES**





1500m<sup>2</sup>







CAPACITY UP TO 1800






## CAPACITY\_

THEATER ..... 50-560  
WALKING DINNER ..... 50-550  
GALA - WEDDING ..... 50-550  
CONCERT ..... 1000-1800

CABARET..... 60 - 330  
CLASSROOM..... 50 - 250  
U SHAPE..... 25 - 85  
BOARD..... 25 - 100

## FACILITIES\_

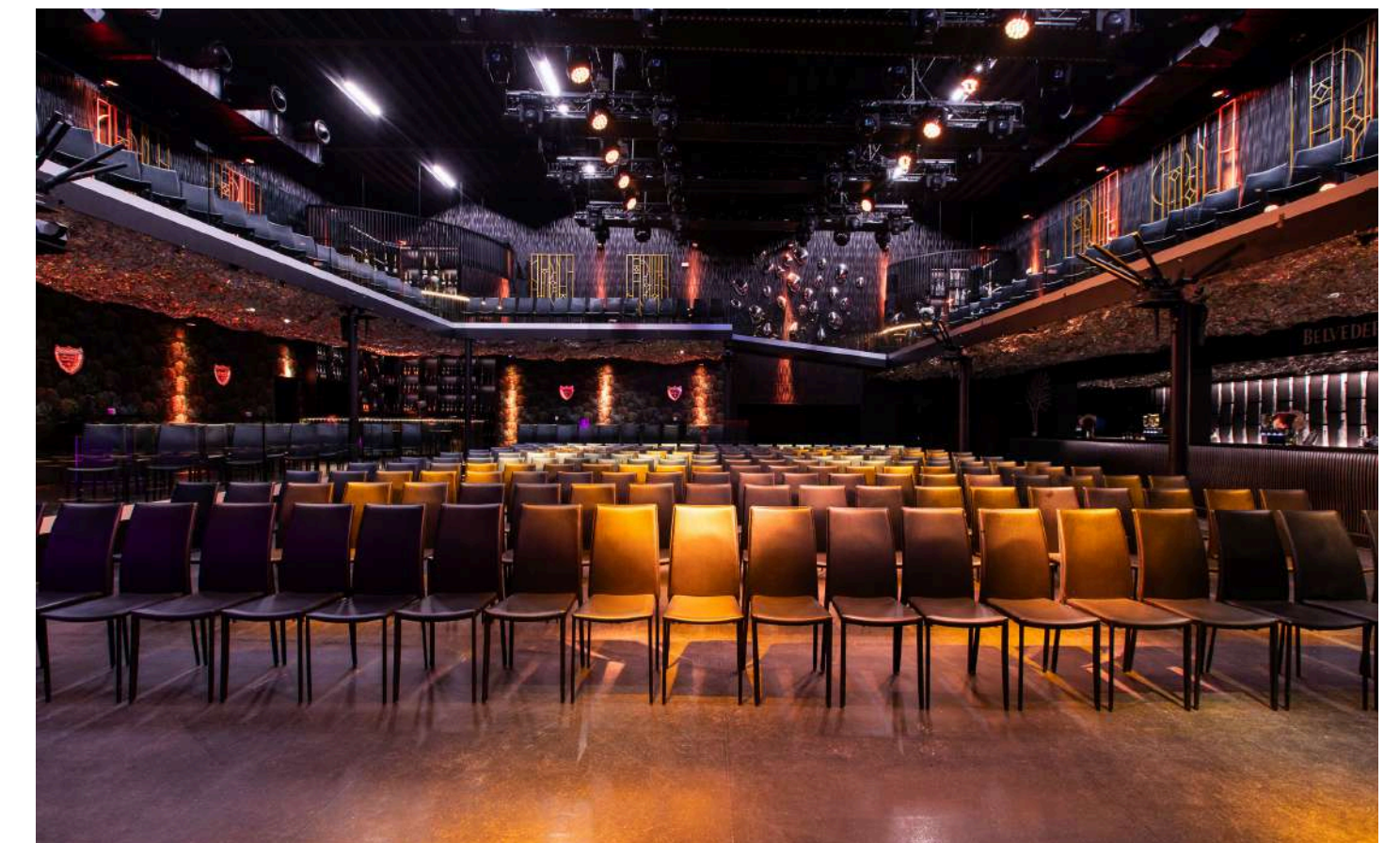
-  HIGH CEILINGS (+9 METERS)
-  ON-SITE AUDIO-VISUAL TEAM
-  200 FREE PARKING SPACES
-  1000 PARKING SPACES (300m from the venue)
-  TERRACE 400m<sup>2</sup> / SMOKING AREA
-  SUMMER TERRACE 2500m<sup>2</sup> / starting June 1st

-  9 BARS
-  FOOD TRUCKS AREA + 1 LIFT FOOD TRUCK
-  WI-FI
-  STAGE
-  HEATING AND COOLING



We offer a flexible theater and conference setup for up to 560 guests. With advanced audiovisual technology and a spacious layout, it ensures clear sound, excellent visibility, and an engaging experience. Ideal for corporate events or performances, this configuration balances professionalism and comfort.

The spacious layout ensures excellent visibility from every seat, creating an immersive and engaging experience for attendees.

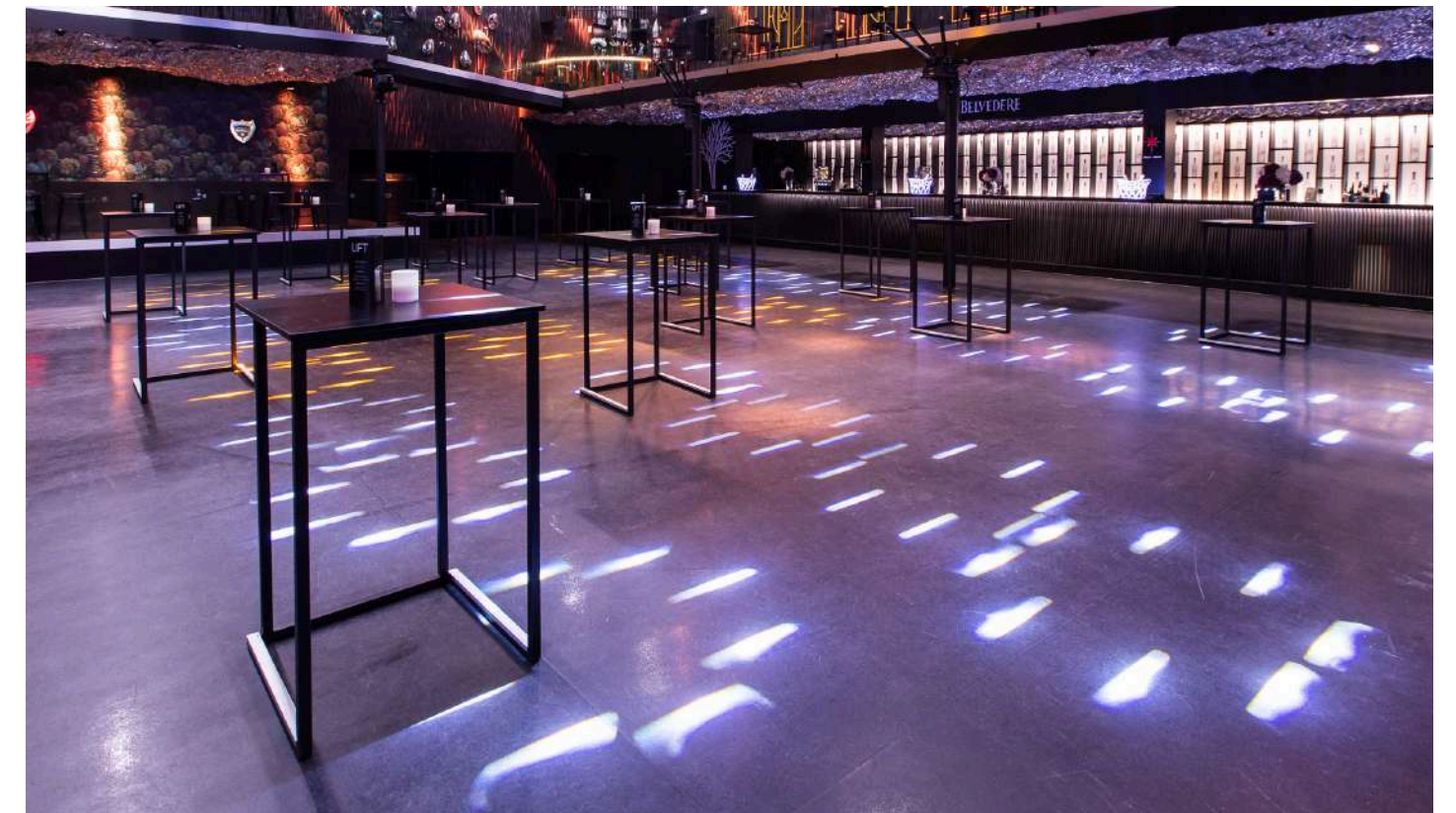


# THEATER\_ CONFERENCE\_

**CAPACITY\_** 50-550



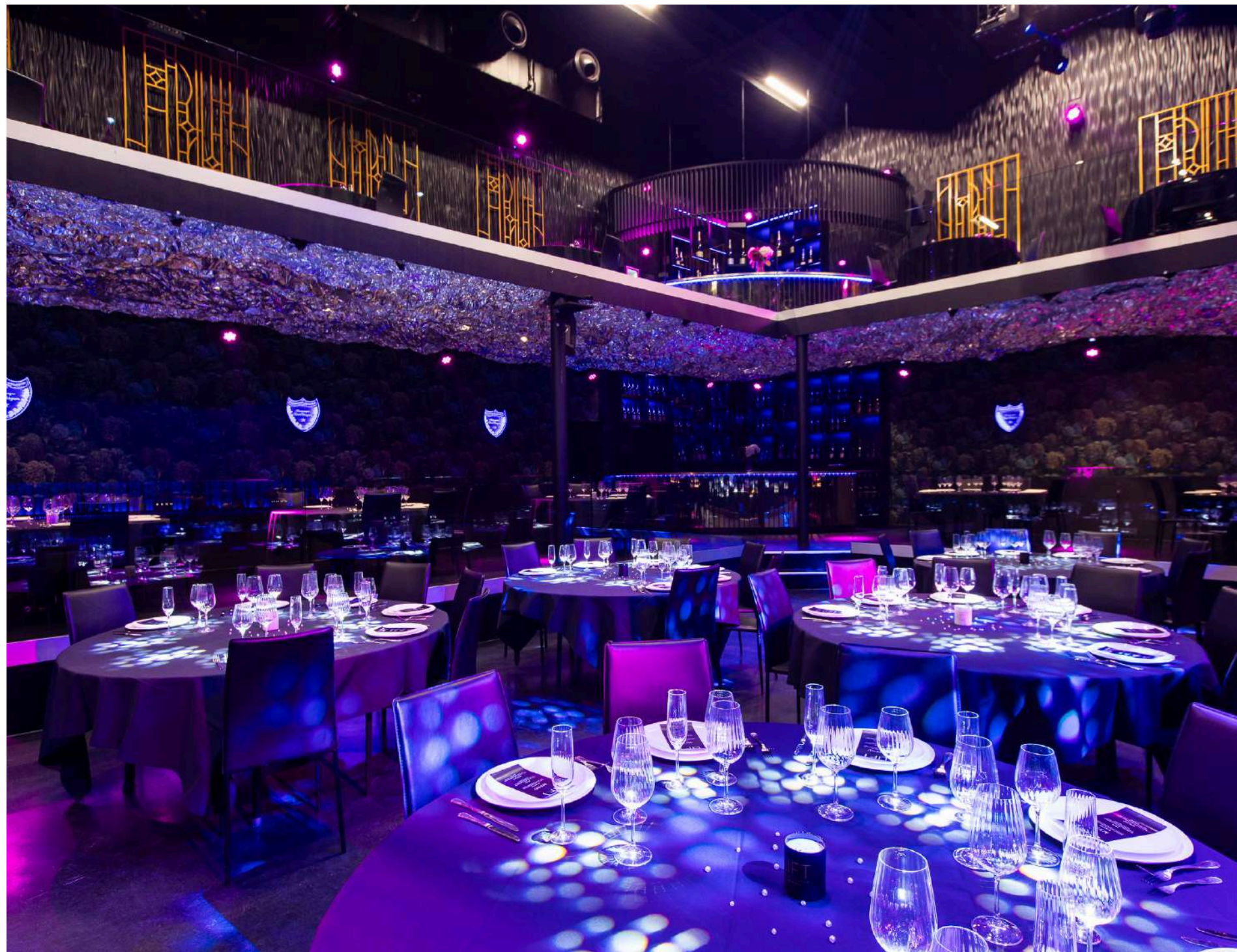
LIFT Brussels offers the perfect space for a stylish walking dinner. With its open and adaptable layout, the venue encourages easy movement and networking among guests. Our modern lighting and audiovisual systems create an inviting atmosphere, while catering stations can be arranged throughout the space to enhance the dining experience. Whether for corporate receptions or private celebrations, this configuration fosters a relaxed and social environment, allowing guests to enjoy gourmet cuisine while mingling in a sophisticated setting.



# WALKING DINNER\_

**CAPACITY\_**

50-550



LIFT Brussels transforms into a stunning venue for gala events. With elegant design and advanced lighting and sound systems, the space offers a sophisticated atmosphere perfect for award ceremonies, formal dinners, or charity events. This configuration blends style and functionality, ensuring a memorable and refined experience.



**GALA\_**

**CAPACITY\_**

50-550





For fashion shows and catwalk events, LIFT Brussels provides a sleek, adaptable space. Equipped with professional lighting and audiovisual technology, the venue ensures your event shines, offering clear sightlines and a stylish environment that highlights every design. Perfect for showcasing the latest trends, this configuration is designed for impact and elegance.



# CATWALK\_

**CAPACITY\_**

FROM 50



The venue is the ideal setting for a one-man show. With advanced sound and lighting systems, the space ensures every moment is intimate and engaging. Whether it's comedy, storytelling, or a solo performance, this configuration creates a focused and immersive atmosphere for both the performer and the audience.



# ONE MAN SHOW\_

**CAPACITY\_**

FROM 50



Charming and versatile setting for dinners or weddings. With customizable decor and ambient lighting, the venue can be tailored to match your vision, creating the perfect backdrop for any special occasion. This configuration provides an elegant yet comfortable environment, ensuring an unforgettable experience for you and your guests.



**DINNER\_**

**CAPACITY\_**

50-550

# TECHNICAL

## SCREENS\_

- 1 x LED Screen 2048x1024
- 8 x Frites LED venue 2048 x 128
- 1 x PC Support Resolume Arena 7

## LIGHT EQUIPEMENT\_

- 64 x Beam Nicols 7r
- 32 x ClayPaky K10
- 16 x Martin Aura Strob Beyond FB4
- 32 X Briteq Tornado par Beyond 5.2
- 110 x Briteq Glowbar
- 3 X Unique Hazer 2.0
- 8 X Storm Confetti
- 14 x Ecs Laser 6 Watt (Pangolin)
- 1 x PC support

## SOUND\_

- 20 x Adamson Metrix S10
- 6 x Sub Adamson E112
- 8 x Amplification Powersoft T902 (Dante)
- Handheld Wireless
- 2 x Amplification Powersoft X8 (Dante )

## CONTROL\_

- 1 x Pioneer A9 (Linked)
- 4 x Pioneer Cdj-3000 (Linked)
- 2 x Shure BLX24RE/B58-H8E
  
- 2 x AdamsonM12
- 1 x Amplification powersoft T902

***LIFT***

**LOCATION\_**

QUAI DES USINES 20, 1000 BRUSSELS

**CONTACT\_**

YVANNE EUCHIN

+32 492 89 19 87

[yvanne@liftbrussels.com](mailto:yvanne@liftbrussels.com)